



How to Set Up Preset Patrol for a Uniview PTZ Camera?

Title:	How to Set Up Preset Patrol for a Uniview PTZ Camera?	Version:	V1.1
Product:	IPC	Date	9/26/2023

How to Set Up Preset Patrol for a Uniview PTZ Camera?

Description

Note: This method is applicable to most scenarios. If the method cannot solve your problem, it is recommended to consult our Tech Support Team.

https://global.uniview.com/Support/Service_Hotline/

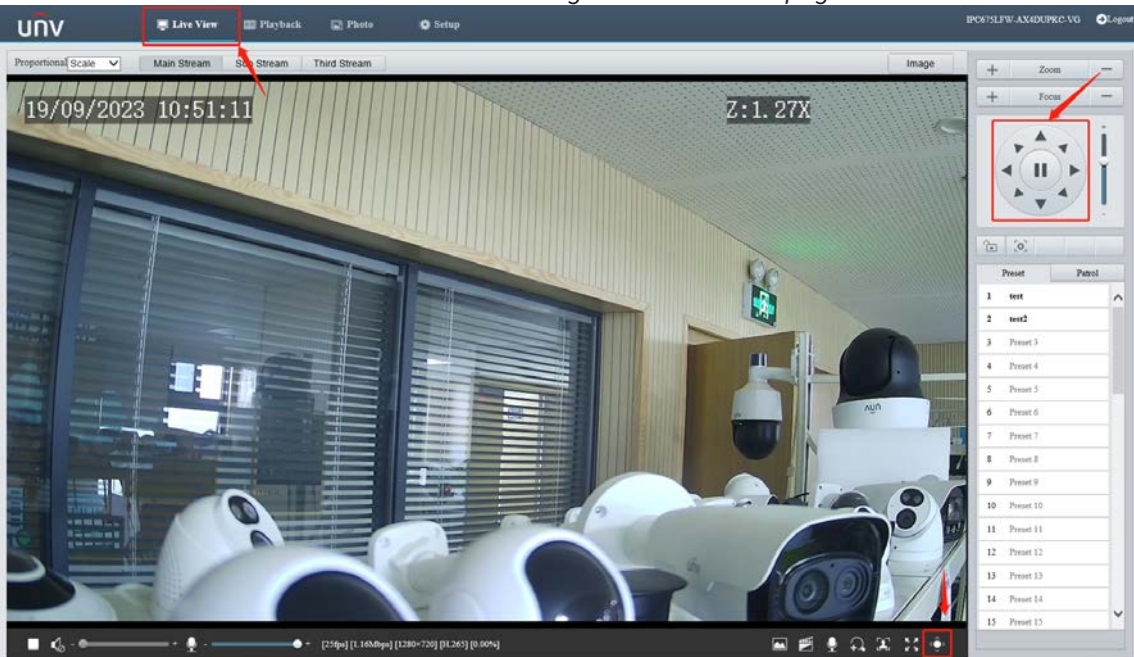
Video Tutorial:

https://www.youtube.com/watch?v=hkw5tRFLeyA&list=PLrBaKYrUJkiv_ShCVIqTeIAsOxyFELjR&index=90

Operating Steps

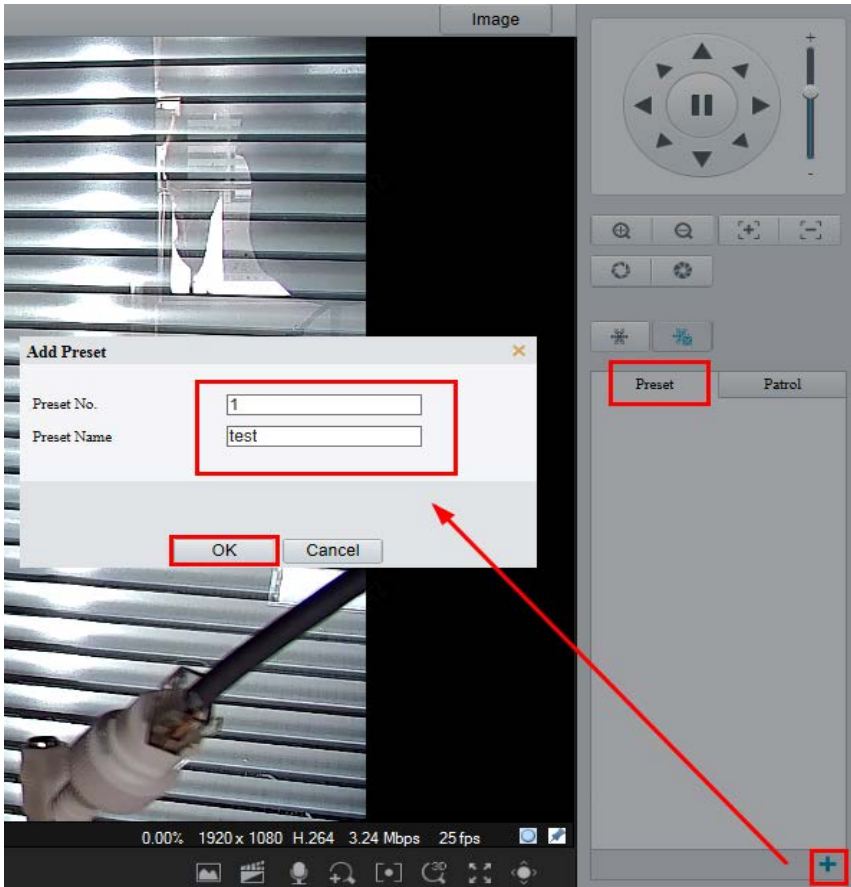
Step 1 Log into the camera's web interface and move the camera to your desired location.

Note: Use the **PTZ Control Panel** on the bottom right of the live view page



Step 2 Click **Preset** and **+** to add a preset location here, and then put a **Preset Name** and **Preset No.** for this preset based on your preference. Click **OK** to save it.

Title:	How to Set Up Preset Patrol for a Uniview PTZ Camera?	Version:	V1.1
Product:	IPC	Date	9/26/2023



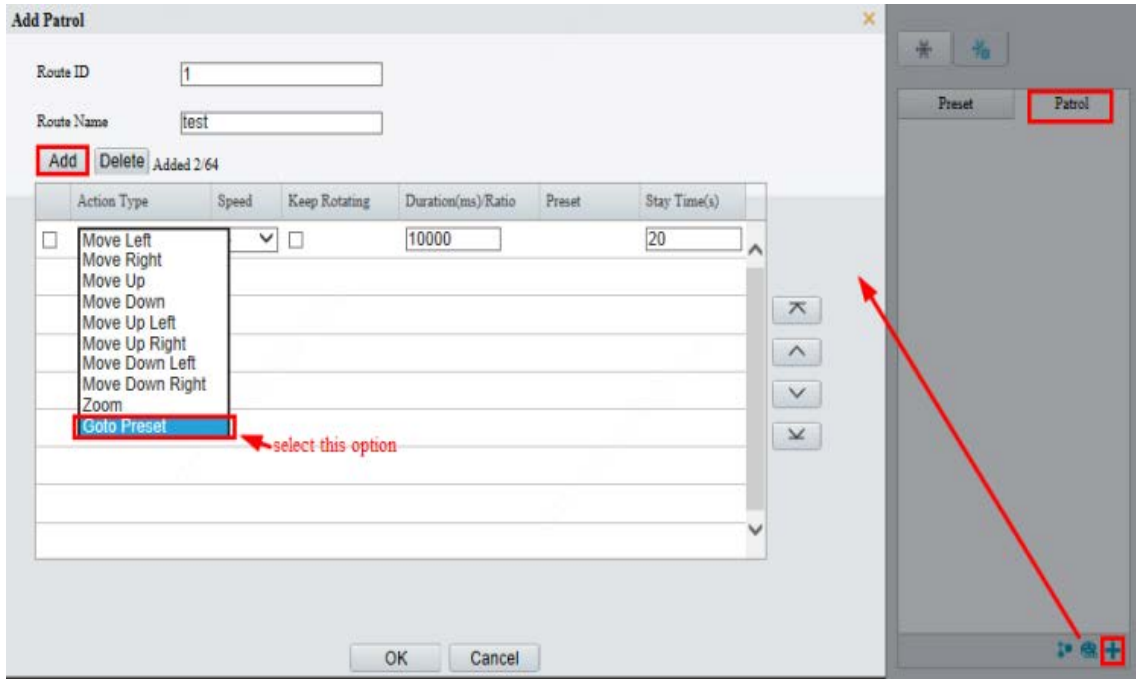
Step 3 Repeat **Steps 1 and 2** to set up multiple preset locations.

Preset	Patrol
1	[test]
2	[test2]
3	[test3]

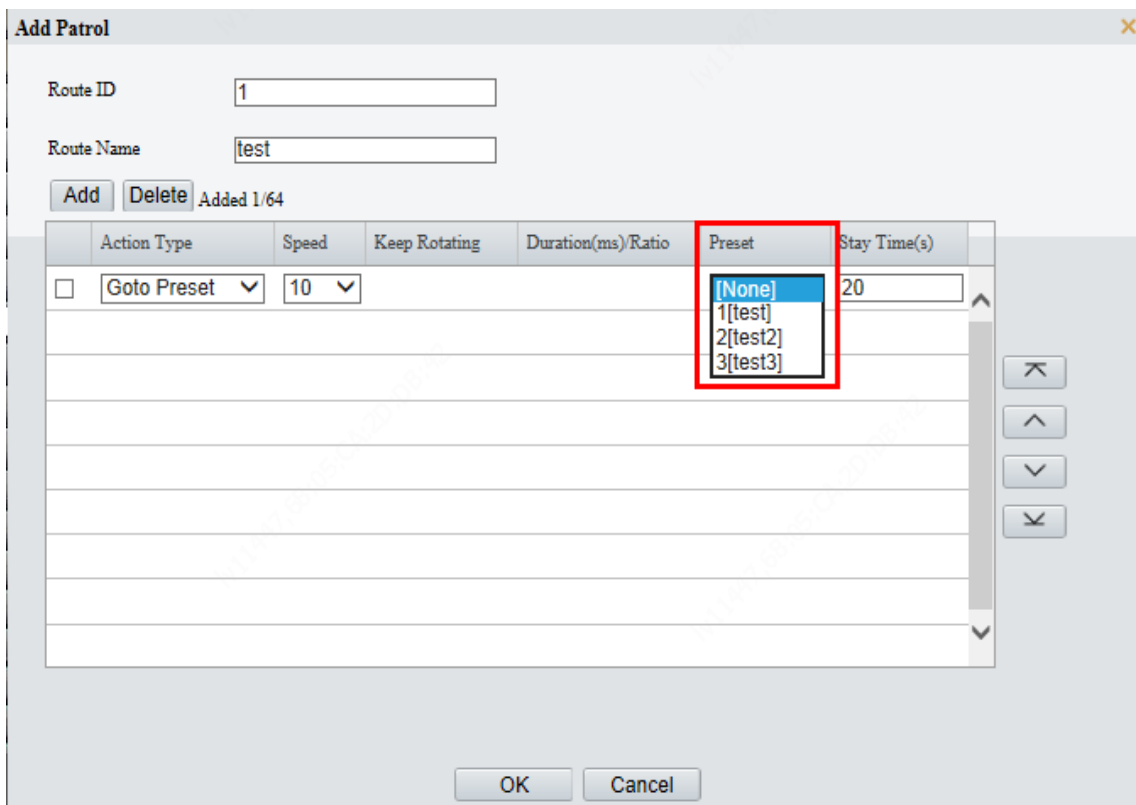
Step 4 Click **Patrol** and **+** to add a preset patrol in the pop-up window, and then put the **Route ID** and **Route Name** based on your preference.

Step 4.1 Click **Add** and choose **Goto Preset** as the **Action Type**.

Title:	How to Set Up Preset Patrol for a Uniview PTZ Camera?	Version:	V1.1
Product:	IPC	Date	9/26/2023



Step 4.2 Choose a **Preset** you set up in the steps above.



Step 4.3 Adjust **Speed** and **Stay Time** according to your preference.

Title:	How to Set Up Preset Patrol for a Uniview PTZ Camera?	Version:	V1.1
Product:	IPC	Date	9/26/2023

Add Patrol ✕

Route ID:

Route Name:

Added 1/64

	Action Type	Speed	Keep Rotating	Duration(ms)/Ratio	Preset	Stay Time(s)
<input type="checkbox"/>	Goto Preset ▾	10 ▾			1[test] ▾	20 <input type="text"/>

Step 4.4 Repeat **Step 4** to add multiple presets in patrol and then click **OK** to save it.

Add Patrol ✕

Route ID:

Route Name:

Added 3/64

	Action Type	Speed	Keep Rotating	Duration(ms)/Ratio	Preset	Stay Time(s)
<input type="checkbox"/>	Goto Preset ▾	10 ▾			1[test] ▾	20 <input type="text"/>
<input type="checkbox"/>	Goto Preset ▾	10 ▾			2[test2] ▾	20 <input type="text"/>
<input type="checkbox"/>	Goto Preset ▾	10 ▾			3[test3] ▾	20 <input type="text"/>

Step 5 Go to **Patrol** menu and click to start the preset patrol.

Title:	How to Set Up Preset Patrol for a Uniview PTZ Camera?	Version:	V1.1
Product:	IPC	Date	9/26/2023



Step 6 Set up and enable **Patrol Plan**.

